

# The Elmer M1 Putter

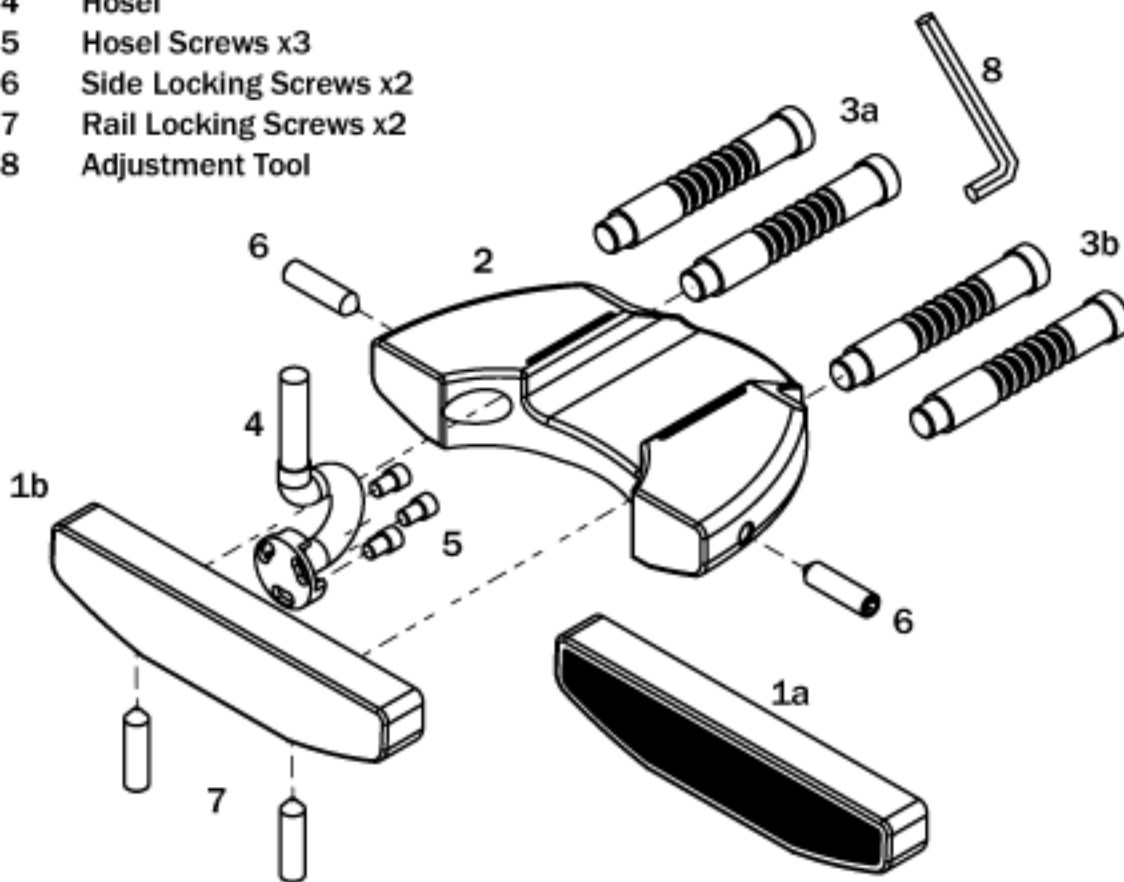
## INSTRUCTIONS

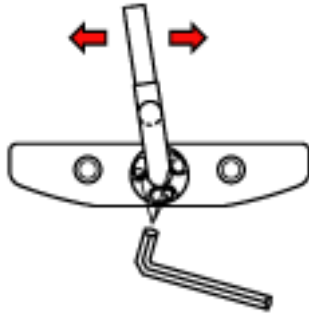
### RULES OF GOLF - Rule 4-2.a.

During a stipulated round, the playing characteristics of a club must not be purposely changed by adjustment or by any other means.

**PENALTY: DISQUALIFICATION**

- 1a Insert Face
- 1b Non-insert Face
- 2 Body
- 3a Brass Rails x2
- 3b Aluminium Rails x2
- 4 Hosel
- 5 Hosel Screws x3
- 6 Side Locking Screws x2
- 7 Rail Locking Screws x2
- 8 Adjustment Tool

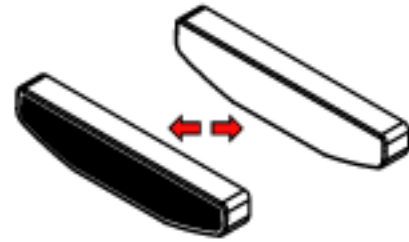




### Adjusting the lie and changing the handing

Using the adjustment tool provided, loosen the two #6 side locking screws to extend the body away from the face. Loosen the three #5 hosel screws and adjust the lie angle so the sole of the putter sits parallel to the ground at address. To change the putter handing you must remove the three hosel screws and then re-attach the hosel in the **left or right-handed position**.

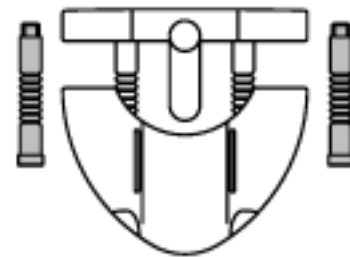
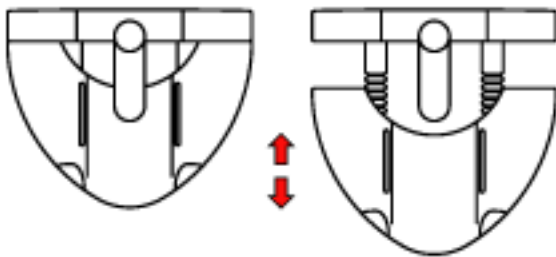
Note: It is easier to make either of the above adjustments with the face removed. See 'Switching faces'.



### Switching faces

Remove the two #7 rail locking screws with the tool provided and separate the face from the rails.

Remove the three screws that hold the hosel to the face. Re-attach the hosel to the new face and re-set your correct lie angle. Re-attach the rails to the face. Tighten the #6 side locking screws having adjusted the lateral balance.



### **Adjusting lateral balance**

Loosen the #6 side locking screws with the tool provided. Adjust face-to-body distance by sliding the body back or forward as required. re-tighten the side locking screws. Generally, the closer the face is to the body, the further the ball will roll and vice versa.

### **Adjusting heel toe balance**

Loosen the #7 rail locking screws with the tool provided and remove the face from the rails. Weight can be adjusted by installing either two brass, two aluminium or one of each supplied rail. When choosing one of each, please be aware the putter will track differently depending on whether the heavier rail is fitted to the inside or outside.

---

Logically, on fast greens you would use the lightweight rails together with the insert face and have the face and body as far apart as possible. On slow greens you would use the heavier rails, the plain milled face and close the face and body gap. However, you can use any combination of the above to suit your personal style and playing conditions.

**Always loosen the side locking screws before making any adjustments to your M1 Putter.  
Do not over-tighten the screws.**

---

**elmer**

*Always ahead of the game*